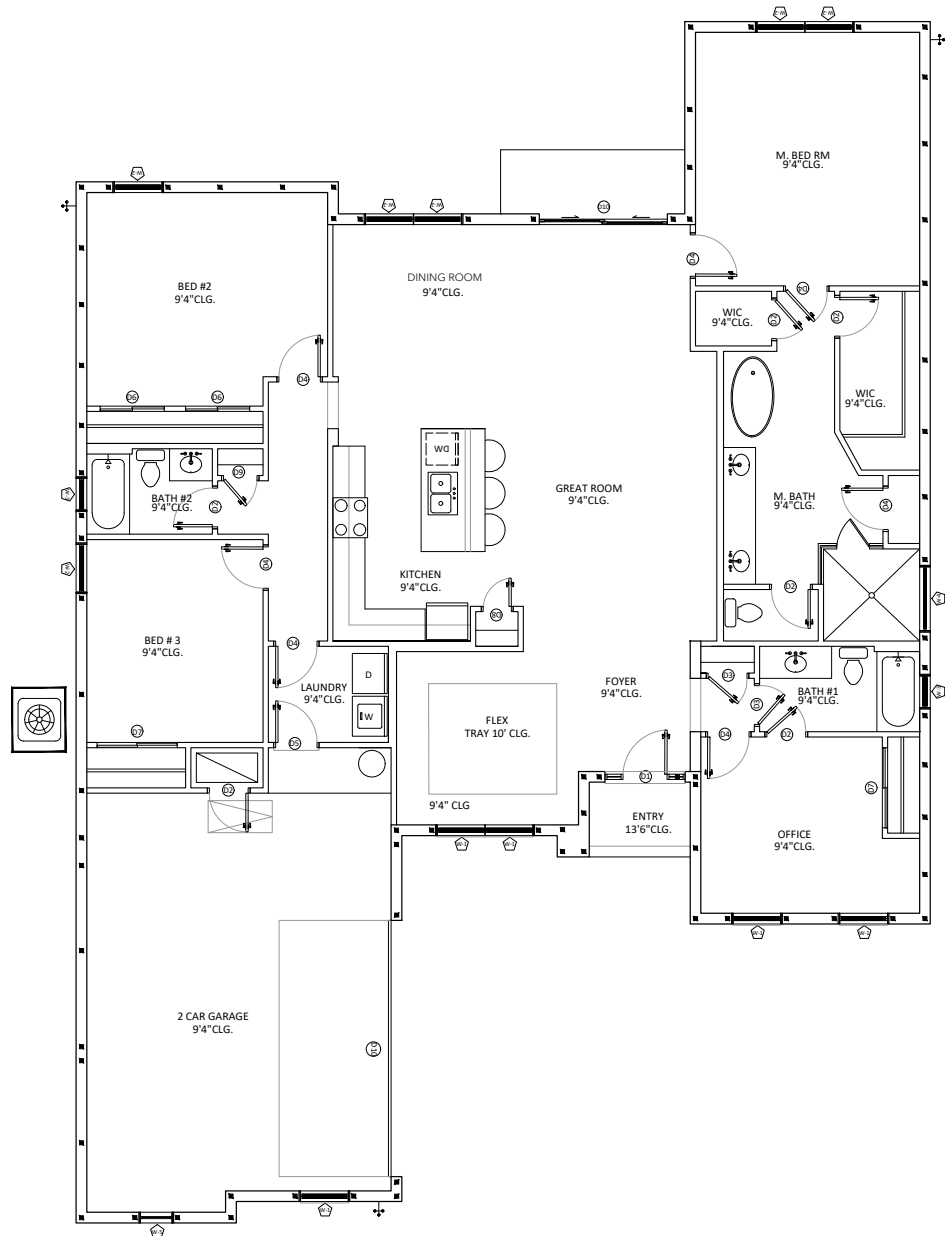


FLOOR PLAN | MODEL 2250B

Palm Bay (Left Orientation)

Living: 2250 Sq Ft
 Entry: 30 Sq Ft
 Garage: 566 Sq Ft
Total: 2846 Sq Ft



- 3 Bedrooms • 3 Baths • Great Room • Dining Room
 Foyer • Office • Flex Room • 2 Car Garage

All dimensions are approximate. Because we are always improving our homes, we reserve the right to substitute building materials, appliances and fixtures, like kind and quality, and to change features, options and architectural details without prior notice. Some models may be reversed from floor plan. Refrigerator, washer and dryer are shown for placement purposes only and are not included in sales price. Windows, ceiling and front porches may differ by elevation.

