

# FLOOR PLAN | MODEL 1850 A/B\*

## Front Elevation | Cape Coral, FL



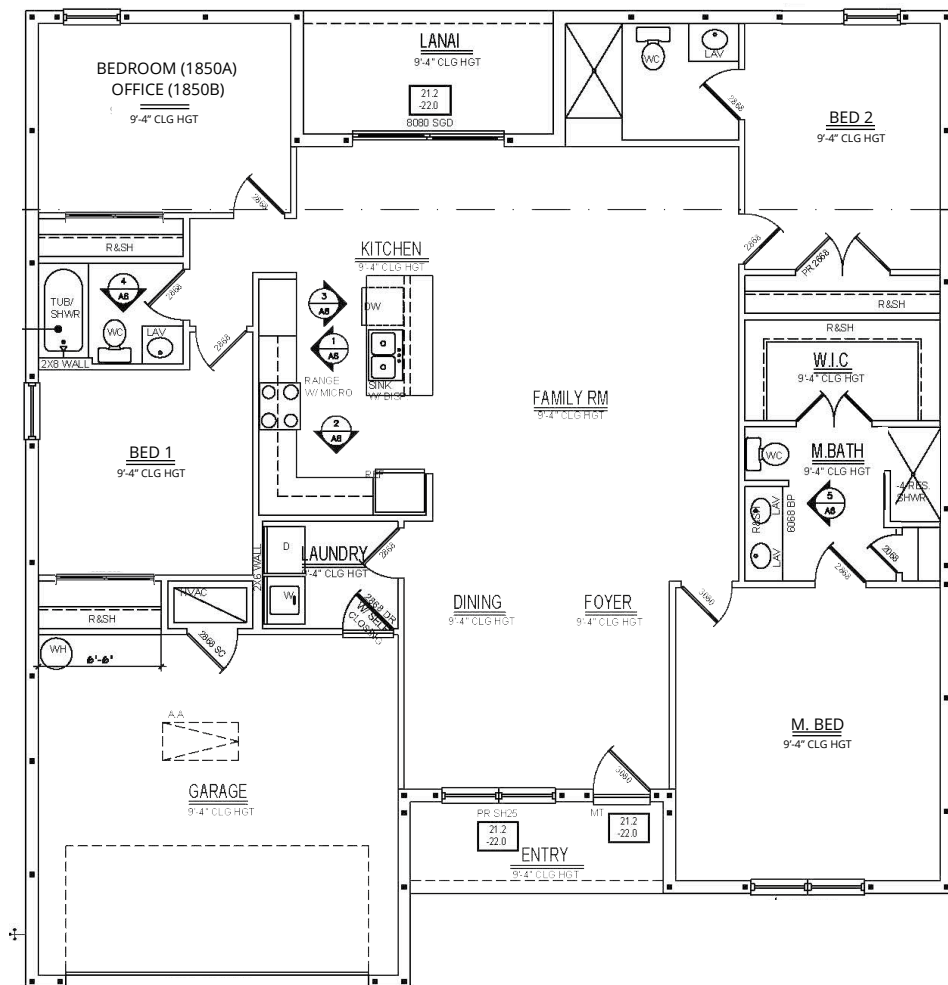
\*3 or 4 bedrooms depending on the lot size.

All dimensions are approximate. Because we are always improving our homes, we reserve the right to substitute building materials, appliances and fixtures, like kind and quality, and to change features, options and architectural details without prior notice. Some models may be reversed from floor plan. Refrigerator, washer and dryer are shown for placement purposes only and are not included in sales price. Windows, ceiling and front porches may differ by elevation.



# FLOOR PLAN | MODEL 1850 A/B\*

Living	1,850 SF
Lanai	86 SF
Entry	64 SF
Garage	392
<b>TOTAL</b>	<b>2,392 SF</b>



3 or 4 Bedrooms\* • 3 Baths • Family Room • Kitchen • Dining  
Office • Foyer • Lanai • 2 Car Garage

\*3 or 4 bedrooms depending on the lot size.

All dimensions are approximate. Because we are always improving our homes, we reserve the right to substitute building materials, appliances and fixtures, like kind and quality, and to change features, options and architectural details without prior notice. Some models may be reversed from floor plan. Refrigerator, washer and dryer are shown for placement purposes only and are not included in sales price. Windows, ceiling and front porches may differ by elevation.

