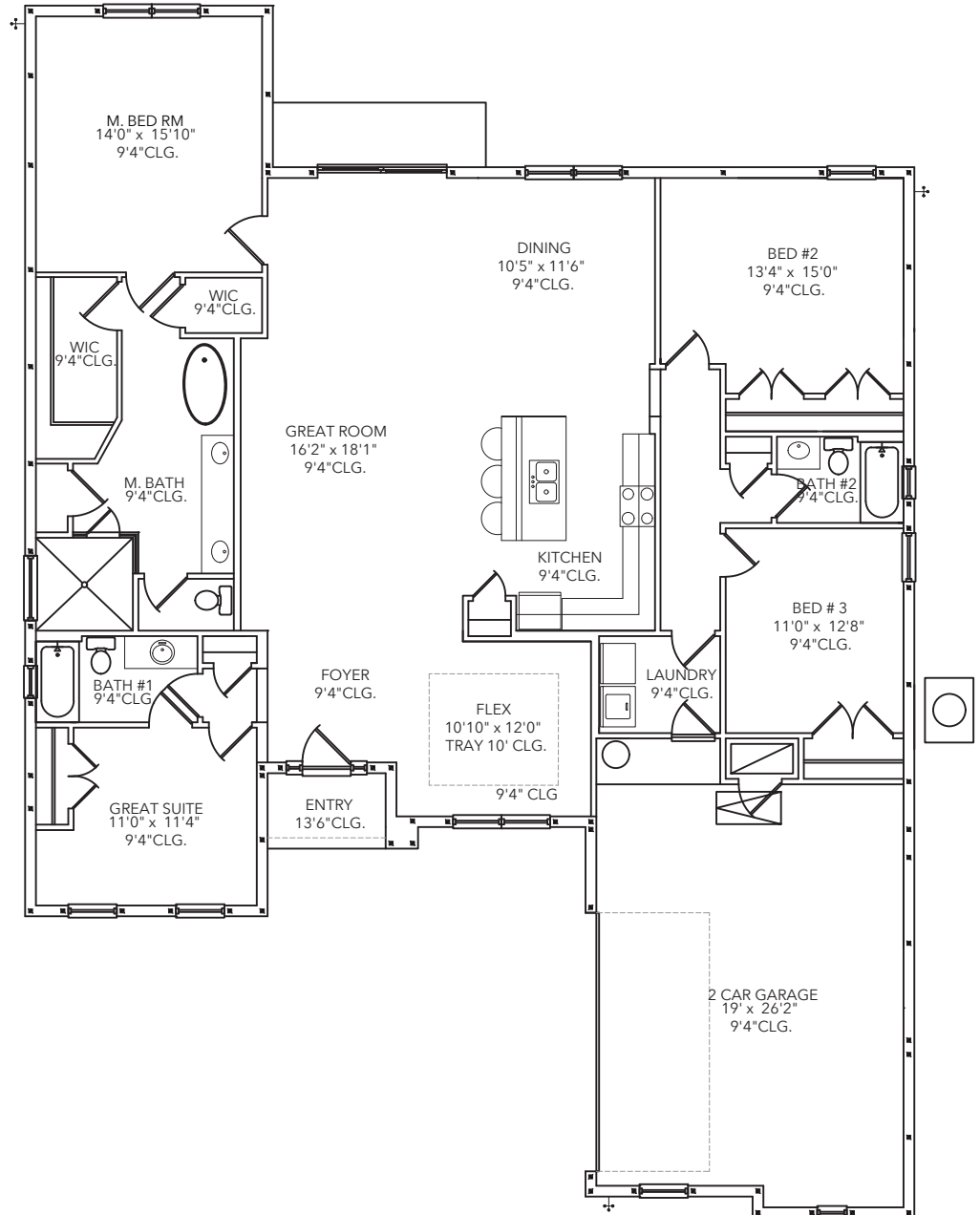


FLOOR PLAN | MODEL 2370

Palm Bay

Living	2,370 SF
Garage	566 SF
Entry	34 SF
TOTAL	2,970 SF



4 Bedrooms • 3 Baths • Great Room • Dining
Foyer • Flex Room • 2 Car Garage

All dimensions are approximate. Because we are always improving our homes, we reserve the right to substitute building materials, appliances and fixtures, like kind and quality, and to change features, options and architectural details without prior notice. Some models may be reversed from floor plan. Refrigerator, washer and dryer are shown for placement purposes only and are not included in sales price. Windows, ceiling and front porches may differ by elevation.

